



Courtesy of Washburn County Tourism

Public Health Booklet

This booklet was developed in collaboration between local and tribal health departments within the Western Wisconsin Public Health Readiness Consortium. A list of these agencies can be found on page 15.



2025





Purpose

To provide information on what public health does, how they respond to emergencies, and how to work collaboratively to protect, promote, and improve the health of our communities.

Contents

What Does Public Health Do? 4-5

Social Determinants of Health 6-7

State Statute 8-9

Public Health and Healthcare 9

Public Health and Emergencies 10-11

Ways We Work Together 12-13

Ways to Get Involved 14

How to Contact Public Health 15

What Does Public Health do?

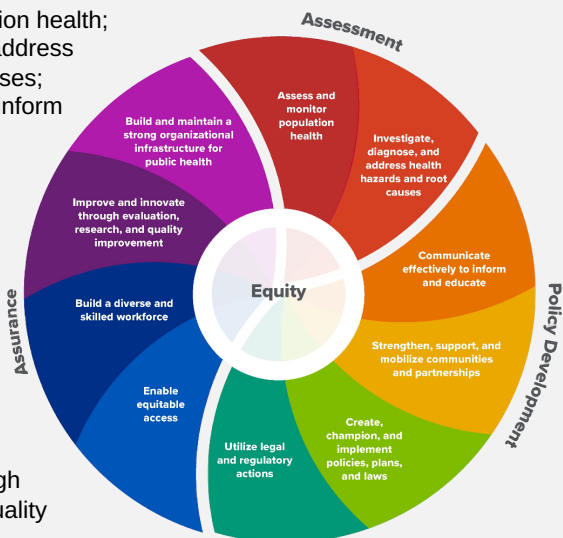
Courtesy of Pierce County

Public health is the science of protecting and improving the health of people and their communities. This work is achieved by promoting healthy lifestyles, researching disease and injury prevention, and detecting, preventing, and responding to infectious diseases.

The 10 Essential Public Health Services below provide a framework for public health to protect and promote the health of all people in all communities.

10 Essential Public Health Services

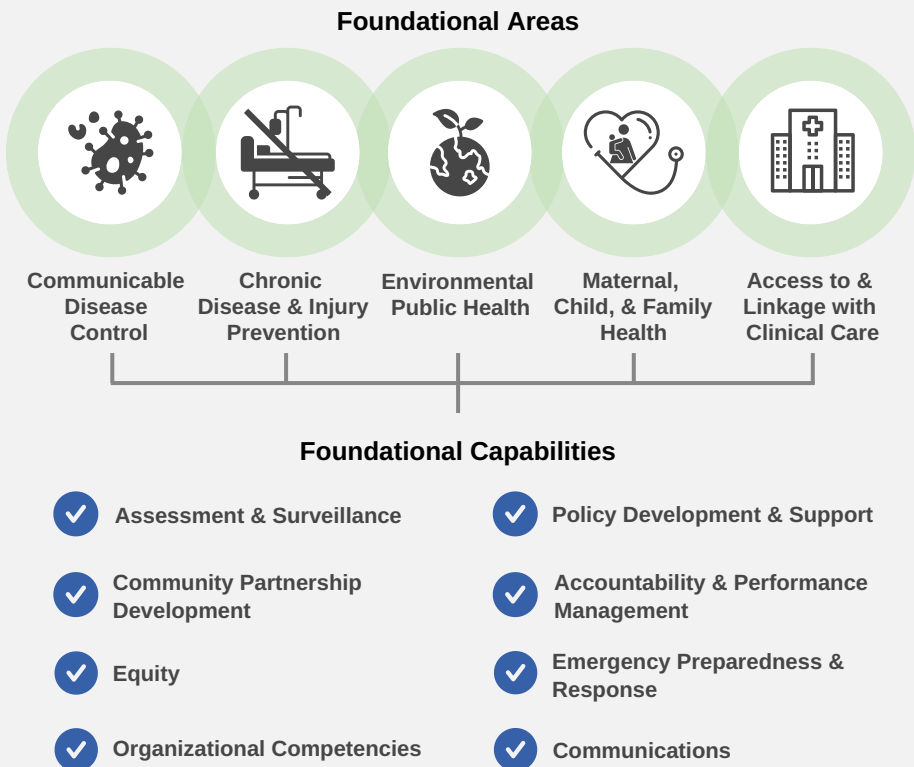
- Assess and monitor population health;
- Investigate, diagnose, and address health hazards and root causes;
- Communicate effectively to inform and educate;
- Strengthen, support, and mobilize communities and partnerships;
- Create, champion, and implement policies, plans, and laws;
- Utilize legal and regulatory actions;
- Enable equitable access;
- Build a diverse and skilled workforce;
- Improve and innovate through evaluation, research, and quality improvement;
- Build and maintain a strong organizational infrastructure for public health



Strong Foundation of Public Health Infrastructure

In addition to the 10 Public Health Services, health departments provide services in foundational areas, as well as areas unique to their community.

The infrastructure needed to provide these services strives to offer fair opportunities for all to be healthy and includes eight foundational capabilities.



Health departments must always be ready to serve their communities. This requires access to a wide range of critical data sources, robust laboratory capacity, preparedness and policy planning capacity, and expert staff to leverage in support of public health protections and services.

Social Determinants of Health

Social determinants of health (SDOH) are the conditions in the environments where people are born, grow, work, live, and age that affect a wide range of health, functioning, and quality-of-life outcomes and risks.

SDOH can be grouped into 5 domains:



Economic Stability

Employment, food insecurity, housing instability, poverty



Education Access & Quality

Childhood development, education, language and literacy



Health Care Access & Quality

Access to health services and primary care, health literacy



Social & Community Context

Access to healthy foods, environmental conditions, quality of housing



Neighborhood & Build Environment

Civic participation, discrimination, incarceration, social cohesion

Did you know that you may be addressing the SDOH in your work?

SDOH is a multifaceted public health problem, which provides an opportunity for collaboration with many sectors (e.g., transportation, education, housing, healthcare).

What Collaboration Might Look Like

There are opportunities to collaborate with and get support from public health to address social determinants of health. Below are examples that illustrate what collaboration could look like to serve communities together.

Healthy & Safe Spaces



Quality & Access of Services



Community Engagement & Education



Health Policies



Though collaboration will look different in every community, the goal to prevent disease and promote health among the population as a whole remains the same.

State Statute

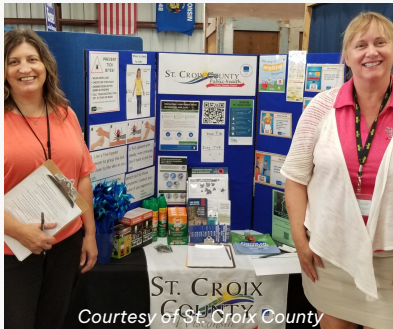
Wisconsin's Administration Code DHS 140 states all local health departments shall provide leadership for developing and maintaining the public health system within its jurisdiction by conducting the following:



1. Surveillance & Investigation

2. Communicable Disease Control

3. Other Disease Prevention



4. Emergency Preparedness & Response

5. Health Promotion

6. Human Health Hazard Control



7. Policy & Planning

8. Leadership & Organizational Competencies

9. Public Health Nursing Services



Wisconsin State Statute Chapter 251 also indicates that local health departments must gather and provide information on the health of the community and develop public health policies and procedures for the community.

Public Health and Healthcare



Public Health

Aims to prevent people from getting sick or injured

Focuses on the entire population

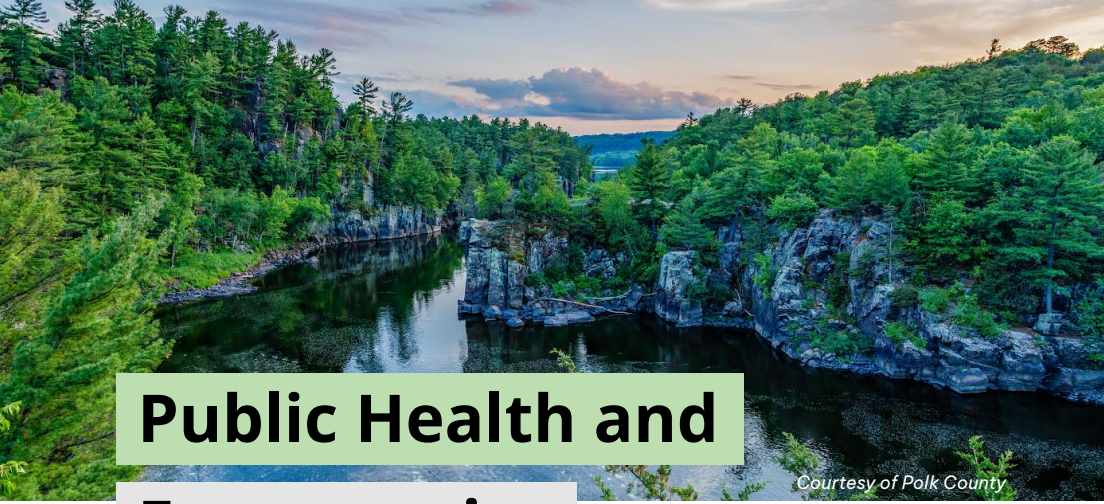


Healthcare

Treats people who are sick and injured

Focuses on individual patients

Public health also provides services to individual patients for example, WIC, maternal and child health, immunizations, etc.



Public Health and Emergencies

Courtesy of Polk County

Public health prepares and responds to any incident or emergency that impacts the health of the population.

● Preparedness - Efforts to prepare for a likely hazard

- Identify hazards in risk assessments.
- Develop and update emergency preparedness plans.
- Participate in preparedness exercises and training.
- Engage partners to enhance planning and coordination.
- Establish and ensure processes to be immediately notified of an actual or potential disaster, outbreak, or emergency.



Emergency Occurs

● Response - Actions taken to respond to an emergency

- Share information with partners and the public.
- Provide updated guidance as the response evolves.
- Execute plans and maintain continuity of operations.
- Detect and investigate communicable threats.
- Implement strategies to reduce negative health outcomes.
- Implement strategies to protect the health of vulnerable populations.

Recovery - Actions taken to restore the community to pre-disaster condition

- Provide updates to partners and the public.
- Identify health recovery needs.
- Initiate health recovery activities and monitor health impacts.
- Complete an after-action report and improvement plan.

To report a public health emergency, communicable disease outbreak, environmental health hazard, or bioterrorism incident after hours, use the after hours/dispatch numbers on page 15.

Look into your emergency preparedness plans and ensure there are procedures in place to communicate with public health:

Confirm where public health contact information is stored and establish processes for sharing updated contact information with public health.

Ensure communication processes for how you alert or share information with public health.

Collaborate with public health and have a shared understanding of when to reach out before, during, or after an emergency.



Courtesy of Burnett County



Courtesy of Monroe County

Ways We Work

Together

Working with community partners is key to preparing and responding to public health threats and building healthy environments in which our communities live, work, play, and learn. The following are examples of ways to work together.



Courtesy of Pepin County



Sharing communication

- Ongoing health communications, community messaging, and data sharing.



Coordination and collaboration

- With community partners and stakeholders to address population needs.



Health policies

- Laws, strategies, and regulations to promote health and prevent disease.



Preparedness exercises

- Tabletop, functional, and full-scale exercises to evaluate and make improvements to local preparedness plans.



Courtesy of St. Croix Tribal Health Clinic



Human/environmental health hazards

- Provide services to mitigate public health hazards (e.g., air and water quality, radon and lead testing).



Community outreach and prevention

- Prevention training, public health vending machines, educational events, and campaigns.



Infrastructure improvements

- To upgrade and repair community infrastructure systems and services (e.g., trails, sidewalks, parks).



Direct care services

- To prevent and protect the community from disease (e.g., immunizations, inspection and licensing, etc.).

To learn more about the additional services your local/tribal health department offers, reach out and use the contact information on page 15.



Public health works with many local partners and leaders within the community to address community health needs. Examples include:

- Libraries
- Faith-based partners
- Fire/EMS districts
- Law enforcement
- Municipalities
- Transportation
- Public works/utilities
- Hospitals/healthcare
- Pharmacies
- Pharmacies
- Schools and universities
- Childcare facilities
- Animal partners
- Non-profits
- Partners serving at-risk populations
- Volunteer organizations
- Private sector

Ways to Get Involved

Partnering with public health, can positively affect the health of our communities, especially in the event of an emergency. Public health encourages partners to get involved in emergency preparedness work.

- ☒ Connect with local public health in the community health improvement plan.
- ☒ Stay up to date with information on local public health initiatives and activities.
- ☒ Contact local public health to participate in the next preparedness exercise.
- ☒ Coordinate to discuss roles for preparedness and response activities.
- ☒ Reach out to local and tribal public health to connect with other community resources. They can assist with needs and questions.



Courtesy of Dunn County



Courtesy of Trempealeau County

Contact Public Health



Phone



After Hours/Dispatch



Email



Website

Ashland Co.

715-682-7004
715-682-7023 Opt 1
achsd@ashlandcountywi.gov
ashlandcountywi.gov/health_human_services



Bad River Tribe

715-682-7133
badriver-nsn.gov/
health-and-wellness/



Barron Co.

715-537-5691
715-537-3106 or 911
health@co.barron.wi.us
barroncountywi.gov/health-and-human-services



Bayfield Co.

715-373-6109
715-373-6120
health@bayfieldcountywi.gov
bayfieldcountywi.gov/141/Health



Buffalo Co.

608-685-4412
608-685-4433
dhhs@buffalocountywi.gov
buffalocountywi.gov/331/
Public-Health



Burnett Co.

715-349-7600
715-349-2128 or 911
hhsph@burnettcountywi.gov
burnettcountywi.gov/81/
Public-Health



Chippewa Co.

715-726-7900
715-726-7900
health@chippewacountywi.gov
chippewacountywi.gov/government/public-health/



Clark Co.

715-743-5105
715-743-3157
clarkcountywi.gov/
healthdepartment



Douglas Co.

715-395-1304
715-394-4432 or 911
douglascountywi.gov/246/
Health-Services



Dunn Co.

715-232-2388
715-232-1348
doh@co.dunn.wi.us
co.dunn.wi.us/healthdepartment



Eau Claire City-Co.

715-839-4718
715-839-4792
echealth@eauclairecounty.gov
eauclairewi.gov/government/o
ur-divisions/health-department



Jackson Co.

715-284-4301
715-284-5357
jcpublihealthwi.org/contact
jcpublihealthwi.org



Monroe Co.

608-269-8666
608-269-2117
moco.health@co.monroe.wi.us
co.monroe.wi.us/departments/
health-department



Pepin Co.

715-672-5961
715-672-5944 or 911
hstewart@co.pepin.wi.us
co.pepin.wi.us/health



Pierce Co.

715-273-6755
715-273-5051
publichealth@co.pierce.wi.us
co.pierce.wi.us/departments/
public_health/



Polk Co.

715-485-8400
715-485-8300
pchd@polkcountywi.gov
polkcountywi.gov/polkcounty
health/



Rusk Co.

715-532-2299
715-532-2200 or 911
rchhs@ruskcountywi.us
ruskcounty.org/publichealth



Sawyer Co.

715-634-4806
715-634-5213 or 911
PublicHealth@sawyerhs.
hayward.wi.us
sawyer-county-public-health-
sawyerhs.hub.arcgis.com/



St. Croix Co.

715-246-8263
715-386-4701 or 911
public.health@sccwi.gov
sccwi.gov/Public-Health



St. Croix Tribe

715-349-8554
stcroixojibwe-nsn.gov/
health-family-services/
comprehensive-wellness-
clinic/



Taylor Co.

715-748-1410
715-748-2200
TCHD@co.taylor.wi.us
co.taylor.wi.us/hd/



Trempealeau Co.

715-538-2311 ext 220
715-538-4399
tchealth@co.trempealeau.wi.us
co.trempealeau.wi.us/depart
ments/health_department/



Washburn Co.

715-635-4400
715-468-4720
health@co.washburn.wi.us
co.washburn.wi.us/public-
health/





Looking forward to collaborating!

Please reach out if you have any questions.